



3 Meath Crescent, London, E2

BUTLER  STAG



Welcome to this stunning split-level penthouse apartment with a fabulous roof terrace that spans over 1400 Sq/ft! This luxurious residence offers the epitome of modern urban living with its sleek design, spacious layout, and breath-taking views.



- Penthouse Apartment Arranged over Two Levels
- 1296 Sq/Ft Internal Living Space
- Private Roof Terrace Spanning Over 1,400 Sq/Ft
- Two Bedrooms
- Two Bathrooms
- Secure Parking

As you enter the apartment, you are greeted by a stylish entrance hall that leads into the main living area. The open-concept layout seamlessly integrates the living, dining, and kitchen areas, creating an inviting space for entertaining guests or relaxing with family. Oversized windows flood the interior with natural light, while high ceilings add to the sense of spaciousness.

The kitchen is a chef's dream, featuring top-of-the-line appliances, sleek handleless cabinetry, and a large island with bar seating. Whether you're whipping up a quick meal or preparing a gourmet feast, this kitchen has everything you need.

On the top level, you'll find the luxurious principal suite and additional second bedroom. The main bedroom boasts a generous proportion and a spa-like ensuite. Each bedroom offers ample closet space and large windows with stunning views of the city skyline.

But perhaps the crown jewel of this penthouse is the expansive roof terrace. Step outside and be greeted by panoramic views of the surrounding cityscape. This outdoor oasis is perfect for hosting al fresco gatherings, enjoying morning coffee with a sunrise backdrop, or simply unwinding after a long day.

Meath Crescent is a sought after park/canal-side development, well situated for various transport links, the closest being Bethnal Green (Central line) and Stepney (District and Hammersmith & City) whilst Victoria Park is only short walk.

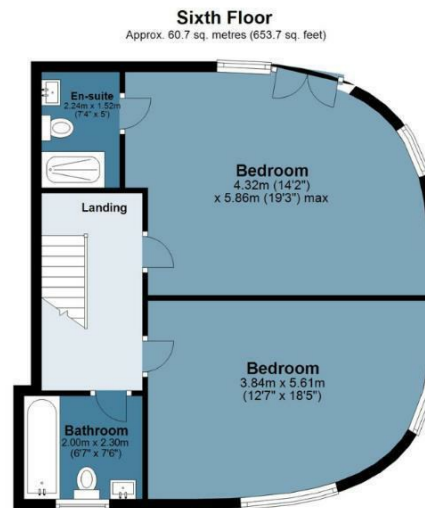
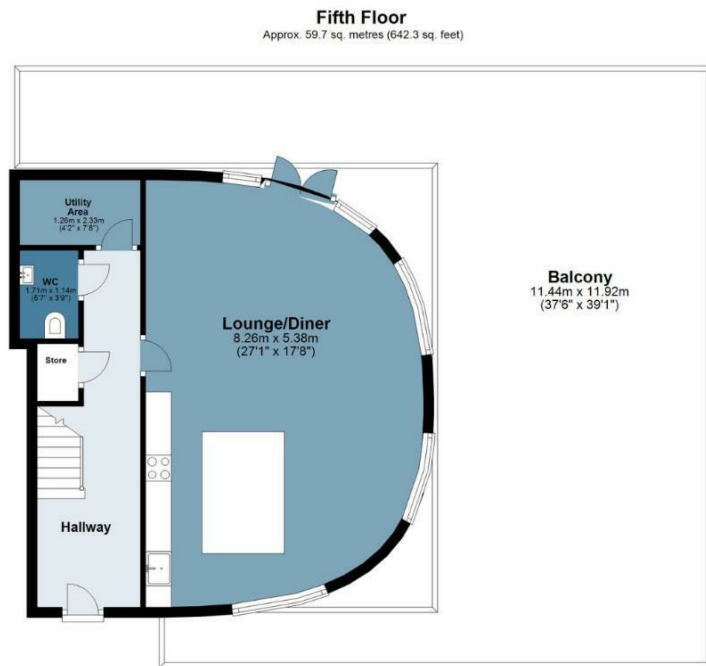




Roundwood Court

Approx. Gross Internal Area 120.4 sq. metres (1296 sq. feet)

BUTLER & STAG



Measurements are approximate and for illustration purposes only. While we do not doubt the accuracy and completeness, we advise you conduct a careful independent assessment of the property to determine monetary value
© @modephoto.uk www.modephoto.co.uk

IMPORTANT NOTICE - These particulars have been prepared in good faith and they are not intended to constitute part of an offer or contract. We have not performed a structural survey on this property and the services, appliances and specific fittings have not been tested. All photographs, measurements, floor plans and distances referred to are given as a guide and should not be relied upon.

BUTLER & STAG

☎ 020 8102 1236

🏠 508 Roman Road, Bow, London, E3 5LU

✉ bow@butlerandstag.com

www.butlerandstag.uk